



# uPVC WINDOWS AND DOORS



# WHY Weatherseal ?



## About Weatherseal

WEATHERSEAL are pioneers in the manufacturing of uPVC Windows and Door systems. Our offerings adopt European Technology with all the raw materials of international quality standards ensuring aesthetic finish and durability.

Weatherseal came into existence in the year 2015. We have delivered more than 3 million sq. feet windows since inception. We take in pride ensuring on-time completion of projects which has helped us to become trusted partners of India's Best Builders like, PRESTIGE GROUP, BRIGADE GROUP, SNN BUILDERS, MAHINDRA AND SHRIRAM GROUP.

Weatherseal is the new one-stop destination for efficient and world-class quality uPVC windows and doors across the Southern India market and currently present in the following locations: Bangalore, Hyderabad, Chennai, Kochin, Kannur, Davanagere, Shimoga, Hubli, Warrangal, Nizamabad, Ahmedabad, kolar and still counting.

## Manufacturing Capability-

State of art facilities spread across 30,000 Sq. Ft. with fully automated CNC machinery with a production capacity of 360 windows a day.



Fully automated CNC Machines



## End-to-end Windows And Doors Solutions-

### SAVE ENERGY, REDUCE COSTS AND SECURE THE FUTURE

Ventilation and insulation are core ingredients of a healthy home environment, and a lot of that is down to the windows. Weatherseal uPVC windows are more energy efficient and have good insulation properties. Our solution provides comfort with warmth in winter and cool and refreshing during summer. Secured homes with Multi-Point Locking System and steel reinforcement inside the UPVC frames. Just turn the handle and it will engage the whole locking system, ensuring your home is a safer place.

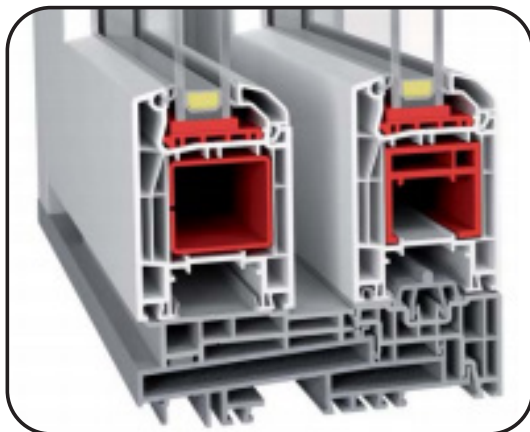
### THEY ARE ENVIRONMENTALLY SUSTAINABLE, MAINTENANCE FREE AND LOOKS NEW FOR GENERATIONS

Here is your opportunity to help the environment and build a green, energy efficient house. Weatherseal Windows are environmentally friendly in many ways: they are ecologically clean to manufacture, they are 100% recyclable, as well as extremely durable.

### INSTALLATION AND SERVICES

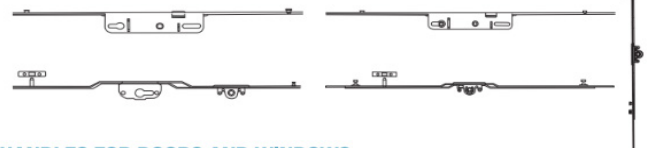
We ensure complete delivery and installation with a commitment. And customers updated at every single step. Post installation we are always there to resolve any issue.

More details in <https://weatherseal.com/about-us/>



#### HARDWARE

##### ESPAGNOLETTES



#### HANDLES FOR DOORS AND WINDOWS

##### Casement Windows



##### Sliding Windows



##### Doors

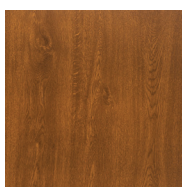
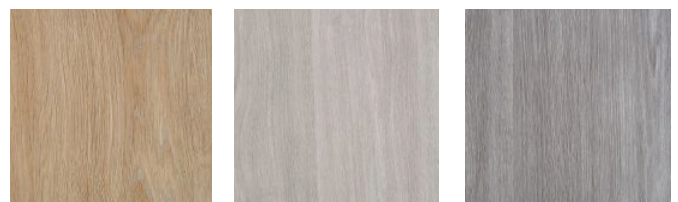


##### Hinges

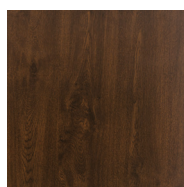


uPVC colour and woodgrain finishes are applied to uPVC profiles as the final step in the manufacturing process- lamination, it creates a seamless low maintenance finish and has endless design possibilities and provides great life-long performance.

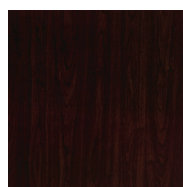
Introducing- woodec - a new generation of decorative wood-like window frames.



Golden Oak



Nut Tree



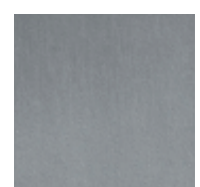
Black Cherry



ASH Black



Grey & Woodec



Silver



## CASEMENT WINDOWS

The Casement windows open inwards or outwards with help of a sash that is fixed on our frame. Casement windows give you a wide opening. The windows not only look beautiful but are also durable and functional.

## SLIDING WINDOWS

Looking for the perfect space-saving feature for your next build? Look no further than energy-efficient uPVC sliding windows. These windows are not only sleek but also secure and sustainable. The dust-free track ensures a far more smoother sliding motion when compared to conventional sliders. WEATHERSEAL Windows offers a complete range of sliding windows depending upon the size, wind load, insulation and design requirements



## FRENCH WINDOWS

French window is with more than one sash, French windows are customized, and can fit any opening.

## FIXED WINDOWS

A window that cannot be open, still gives you a bright view of the outside world. Fixed windows are recommended where light or vision or insulation are required.





## BAY WINDOWS

Bay window is a combination of two or more casement windows at an angle. Any sash of the window can open or can even remain fix. WEATHERSEAL windows offer an exclusive range of bay windows depending on the requirement.



## AWNING WINDOWS

An Awning window is a casement window that is hung horizontally, hinged on top, so that it swings outward. Using a double glazed technique, Energy Efficient Windows with uPVC frames ensure your home is kept cool in summer and warm in winter.



## TILT AND TURN WINDOWS

Tilt 'n' Turn windows are a European style of window, which has three positions: tilt, open, and lock. Firstly, like a casement that is hinged on the side allowing maximum airflow, with the added benefit of being able to effortlessly and safely clean the glass from the inside.

Alternatively, Tilt 'n' Turn windows can tilt the sash inwards from the top, which is ideal when you want to have some airflow without a draft. They also have the added benefit of being locked while the window is open with our heavy-duty multi-point locks, ensuring a tight seal, insulation and security.



## ARCHED WINDOWS

Arched windows are windows having a curved head from the top. It gives a very royal look to your living.



## uPVC Ventilator

Purpose-built openings to allow air flow depending on climate, building design. This natural ventilation of buildings depends on climate and building design.



## CASEMENT DOORS

Traditional casement door is hinged from either side. Paired with European hardware winders, the windows not only look beautiful but are also durable and functional.

## SLIDING DOORS

The great thing about sliding windows is the space they save. If you don't want the sash protruding in or out (e.g. on a veranda or walkway), then sliding doors are for you. Combined with multiple locking points they are also very secure. It also comes with Easy fitting insect screens.

The sliding system series with narrow design, replaceable seals and specially matched reinforcements for a good static value can be designed according to individual requirements. It is the best suitable system for windows as well as huge doors for balconies and terrace.



## LIFT AND SLIDE

With a smooth-running lifting mechanism even a huge sliding element, with large reinforcements for the highest degree of stability, can be moved very easily. The wide opening provides a connection with the outside without disturbing steps. Popular choice for opening large expanses. A system of lever and wheels lift the panel off the sill enabling the movement of large, heavy panels with very little efforts.

## SLIDE AND FOLD DOORS

Bringing outdoors inside. You can use a single door hinged separately to act like a normal door when the other door panels are closed and locked in position. You can also choose to fold all the door panels back for an uninterrupted view. Mostly opted for large scale openings.



## TILT AND SLIDE

Like the Tilt & Turn without the swing inwards, neatly and smoothly slides across. Tilt position for secure ventilation. Operations performed with a single handle.



## SMART SLIDE

Smart-slide scores highly for sealing owing to the innovative locking mechanism and the high-quality sealing surfaces. Additional locking points offer outstanding sealing and even more security. The interplay between the various technical Features ensures the smart-slide achieves extremely good sealing performance against air, wind and driving rain. It is easy to use, reliable and allows large-size glazing.

## QUALITY STANDARDS



### ISO-9001 certificate

Implementing this quality management system requires constant enhancement and improvement of processes and products, which is monitored on a regular basis by the British Standards Institution (BSI).



### RAL-certified

RAL Quality Marks identify products and services that are manufactured or provided according to high, precisely specified quality criteria and monitored on a regular basis by independent test institutes (SKZ, Süddeutsches Kunststoff-Zentrum and IFT, Institut für Fenstertechnik)..



### Top innovator

This award is issued to the most innovative SMEs in Germany and is also one of the most well-respected corporate awards around..

## TEST CERTIFICATES



Reaction to Fire & Thermal Transmittance



Airborne Sound Insulation



Wind & Water Penetration Test



Recycling and environmental protection



Environmental Product Declaration



Structural Test Report

USP of Our Product	Pride Card		
	Weatherseal		Yes
Customer Service (Monday to Saturday)	Yes	Gasket Embedded in Profile (Covered under warranty)	Yes
20 Years of Warranty (Profile)	Yes	Wool Pile Part of Profile	Yes
5 Years of Warranty (Hardware)	Yes	TPE (Thermoplastic elastomer)	Yes
Free Service (6 Months)	Yes	Chinese Product & Materials	No
Call Centre Support	Yes	CRM System (Automatic SLA Tracking)	Yes
Escalation Support in 48 hours	Yes	Knowledge Rich Engineering Team	Yes

## Our Clients



More details in <https://weatherseal.com/about-us/>

## Showroom Locations

#440 18th Main Road 6th Block,  
Koramangala, Landmark: Devi Eye Hospital  
Road, Bengaluru, Karnataka 560095

Kingston Heights Banjara Hills Road No. 2,  
Next to Birth Place Hospital, Andhra Pradesh  
Real Estate, Green Valley, Banjara Hills,  
Hyderabad, Telangana 500034

New no.315/2, Old no.235/2, 1st Floor, Anna  
Salai, opp. Kamarajar Arangam, Ellaiamman  
Colony, Teynampet, Chennai,  
Tamil Nadu 600018

202, Regus, Second Floor,  
Iscon Crossroads, Ahmedabad,  
Gujarat 380059

2692 Mama's Joint road, 2nd main, 2nd cross,  
MCC B block, MCC B Block, Kuvempu Nagar,  
Davanagere, Karnataka 577004

Neha Nihal complex,  
Savartine road, Near Gopi circle,  
Shimoga- 577201

Akshay Garden, B-Block, Shop No. 4, Ban-  
ashankari Extension, Vidyanagar,  
Hubli- 580030

3-9-517, Beside Ragavendra Polyclinic,  
Reddy Colony,  
Hanamkonda, Warangal - 506001

House No.- 15-9-5/8/1  
Opp: acp office, Near railway kaman,  
Dubbak - Kanteshwer road,  
Nizamabad- 503002

Banabettu, 1st Cross, Near Mandavi  
Presidency, Kinnimulky Old Road,  
Udupi- 576101

CC29/27F, Next To KTM Showroom,  
Toc-h Junction, Vyttila, Ernakulam, Kerala  
682019, India

Costa Hub, Alakode Road TMC 6 - 348Q Emcee  
Tower, Manna Road, Taliparamba Kannur,  
Kerala 670141

Gokula Nilaya, Antharagange Main Rd,  
near Kuvempu Park, Kuvempu Nagar,  
Kolar, Karnataka- 563101